



Landscape Portfolio





Anson (Chun Yin) Lau

University Graduate

Anson is passionate in the field of landscape urbanism, with an interest to work in the discipline of urban design and master planning. He believes the future of the urban landscape is an opportunity to connect the community and environment while challenging the landscape architect to strike a balance between people and nature.

Projects

Salisbury

Regeneration for the Future of Salisbury

Dowse Lagoon

Water Quality Improvement Project

Brisbane City

The Carbon Free City of Brisbane

REGENERATION FOR THE FUTURE OF SALISBURY



01

Recognise the munition history and industrial characters

02

Enhance the community cohesion & interaction

03

Promote mixed land use for socio-cultural events

04

Improve the connectivity of the industrial precinct

Salisbury Precinct Masterplan

Legend

- 01** Salisbury Community Complex
- 02** Street Market (Chrome Street)
- 03** Upgraded RSL Park
- 04** Enhanced Evans Road (Street Tree Planting)
- 05** Salisbury Convention Centre
- 06** Munition Trail
- 07** Dining & Catering Precinct
- 08** Green Corridor (Timber Walk)
- 09** Green Corridor (Precinct to Train Station Walk)
- 10** Green Corridor (Precinct to Toohey Forest Walk)



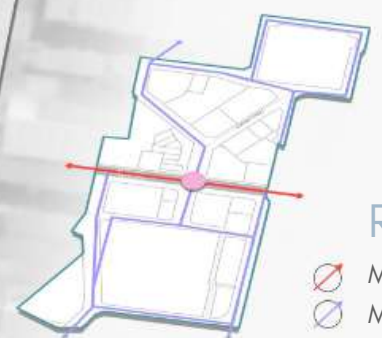
Heritage Map

- Registered Heritage
- Heritage (Pending)



Pedestrian Network Map

- Enhanced Streetscape
- Character Streetscape
- Green Corridor
- Footpath



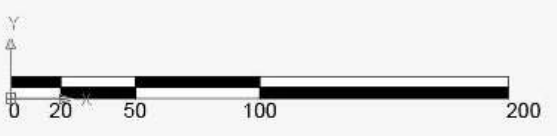
Road Network Map

- Major Road
- Minor Road



Green Space Map

- Proposed Green Space



Transformation of Chrome Street into a character streetscape featuring with markets and festivals.



Reinvigoration of munition heritage into a Dining & Catering Precinct with bars and restaurants.



Expansion of RSL Park with improved connectivity to the surrounding interfaces.



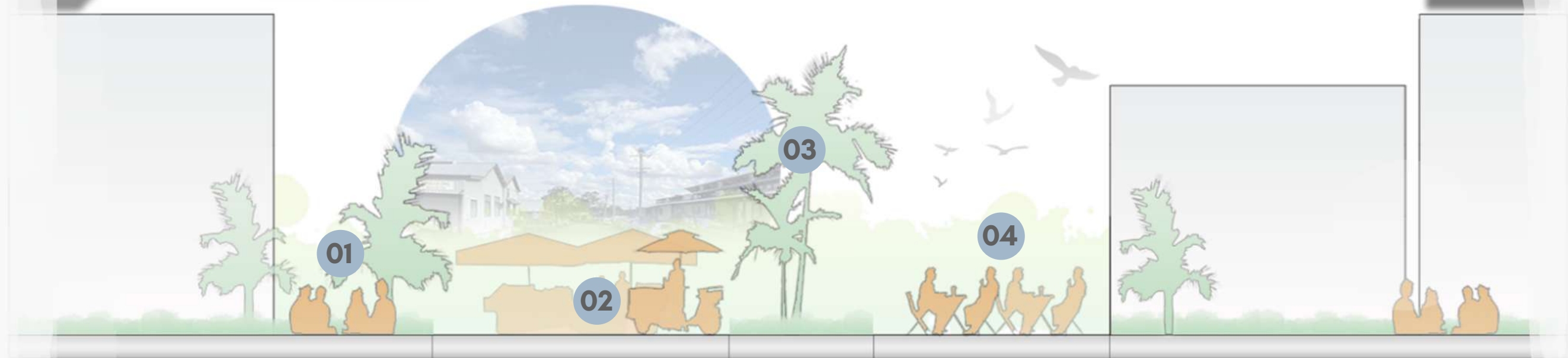
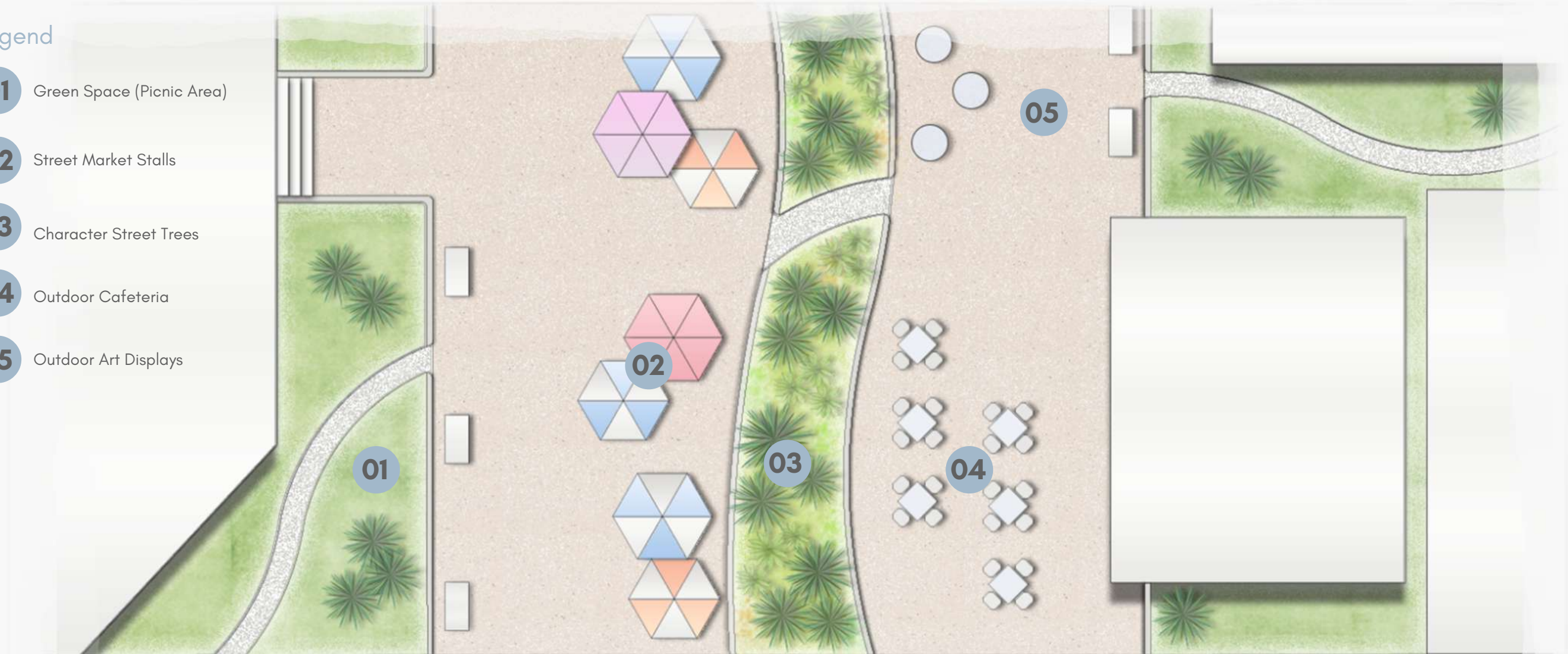
Activation

Mixed Land Use

Connectivity

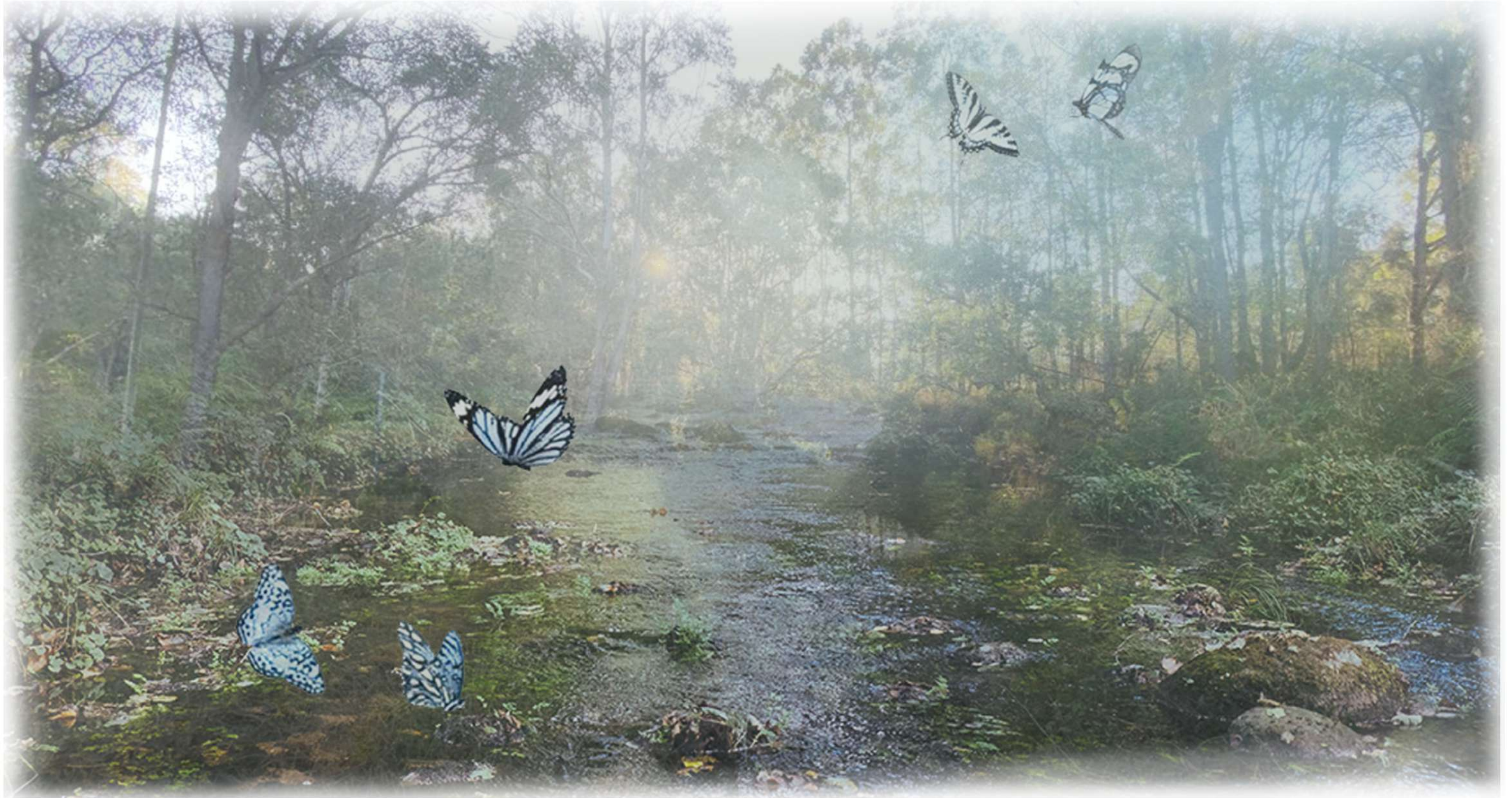
Legend

- 01** Green Space (Picnic Area)
- 02** Street Market Stalls
- 03** Character Street Trees
- 04** Outdoor Cafeteria
- 05** Outdoor Art Displays



Industrial Cultural Precinct

THE DOWSE LAGOON: WATER QUALITY IMPROVEMENT PROJECT



01

Reduce Surface Runoff

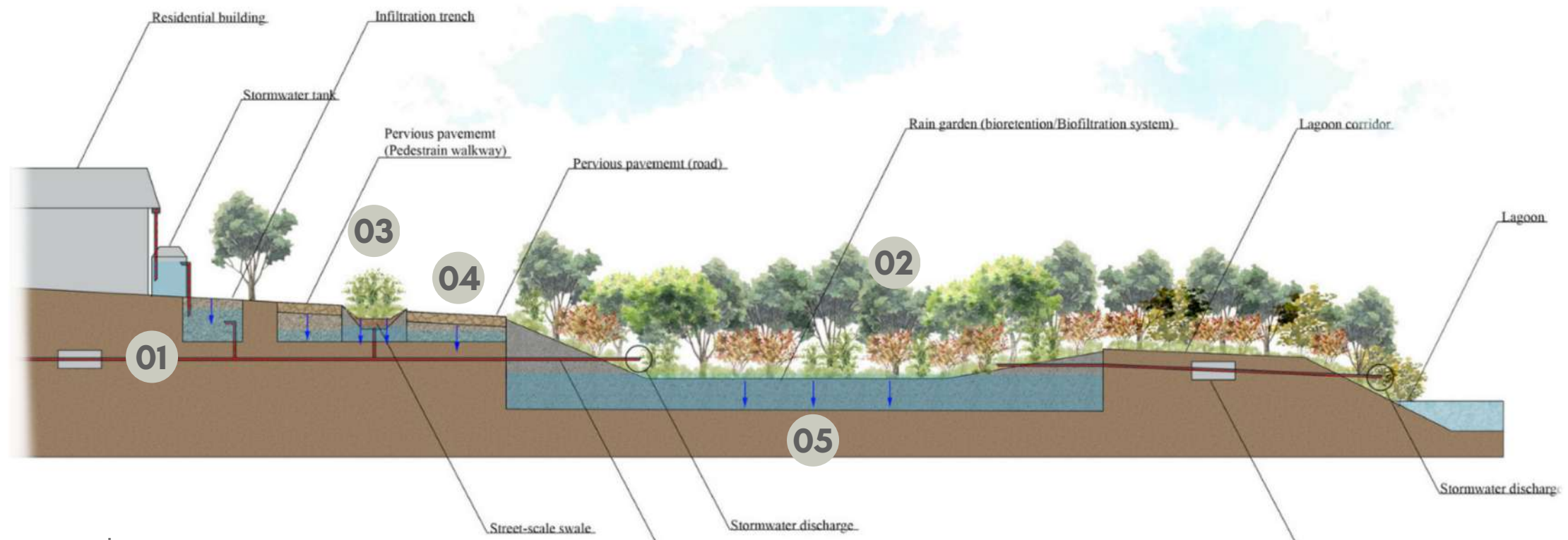
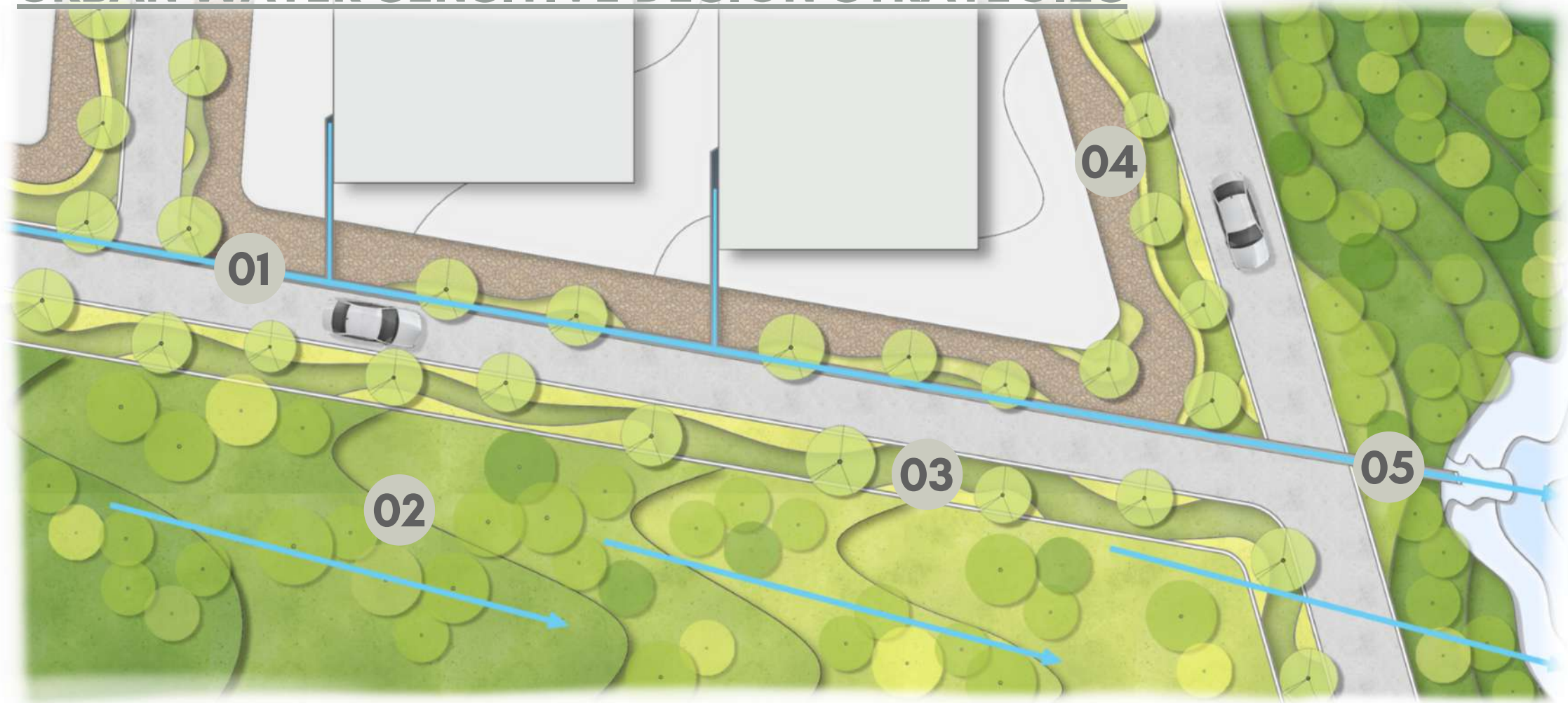
- Reducing Impervious Surface
- Minimising concrete pavement

02

Promote Stormwater Infiltration

- Protecting trees and open space
- Detaining stormwater through infiltration system

URBAN WATER SENSITIVE DESIGN STRATEGIES



Legend

- 01** Stormwater Drainage System
- 02** Vegetation Cover
- 03** Swales and Buffer Strips
- 04** Pervious Paving
- 05** Bioretention Basin

TRANSFORMATION OF DOWSE LAGOON



Year 2020



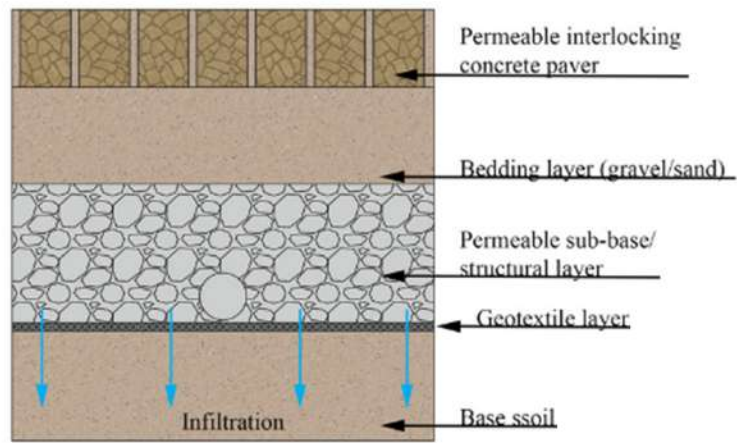
Year 2050: Rain Garden



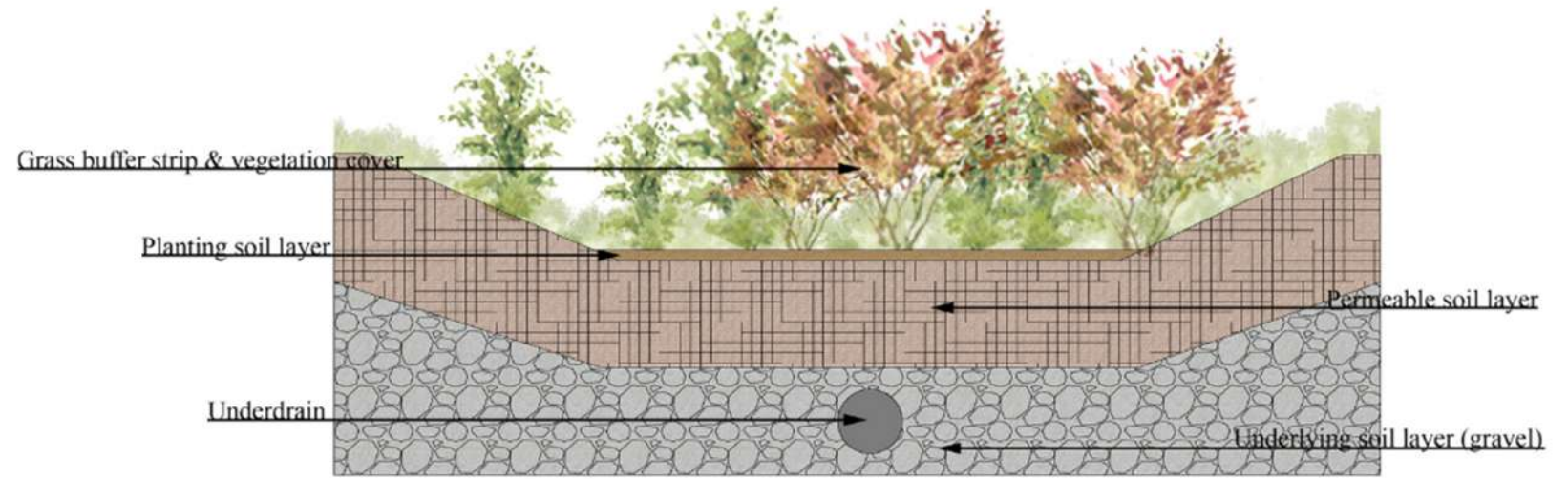
Year 2050: Improvement of Water Quality



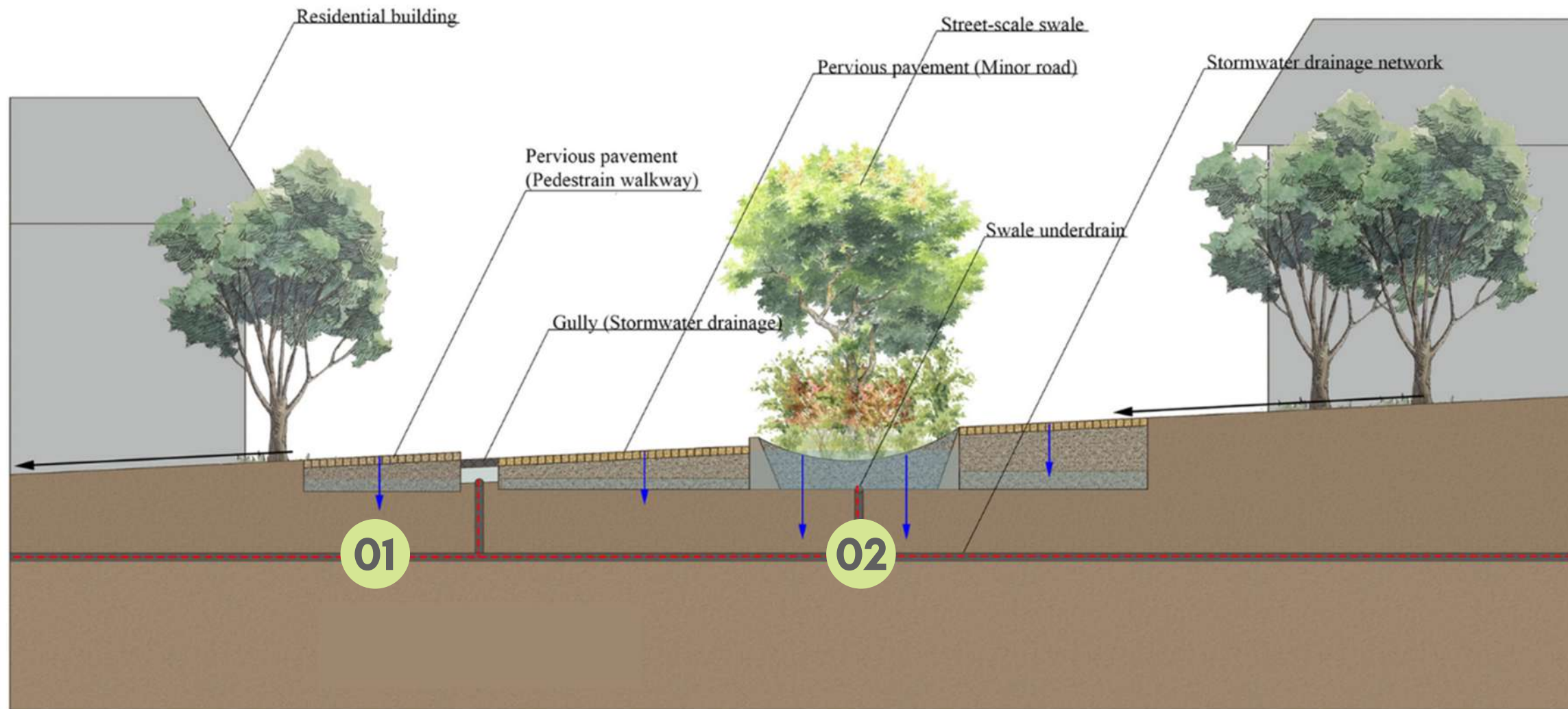
Year 2020



01 SECTION A-A



01 SECTION B-B



01 Overall Section of Pervious Pavement & Street Scale Swale





THE CARBON FREE CITY OF BRISBANE

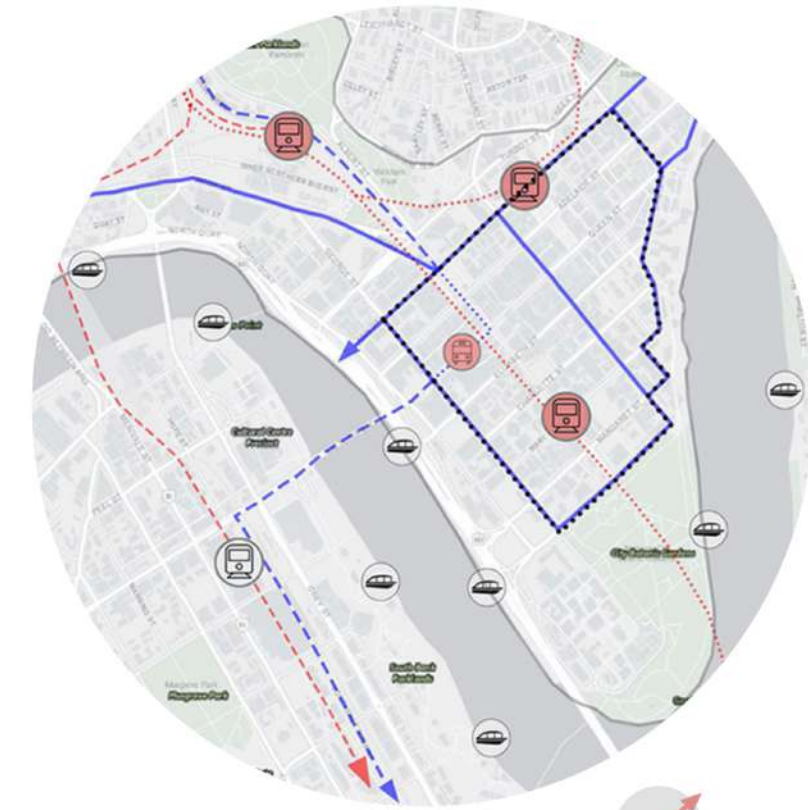
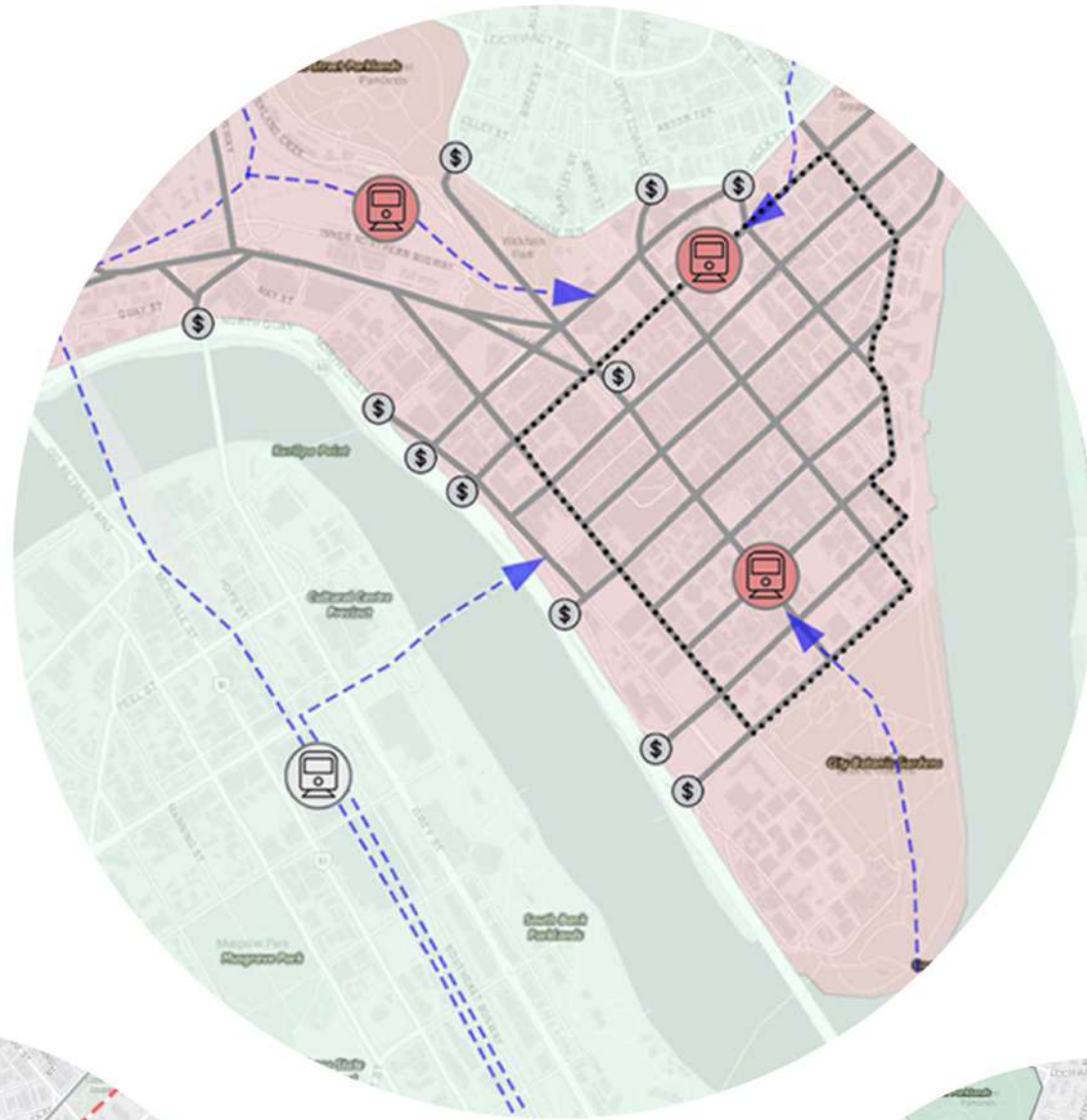





- 01** Implementation of Vehicle and Emission Control System
- 02** Encourage the Usage of Public Transportation
- 03** Development of Cycling-Oriented Network
- 04** Development of Pedestrian-Oriented Network

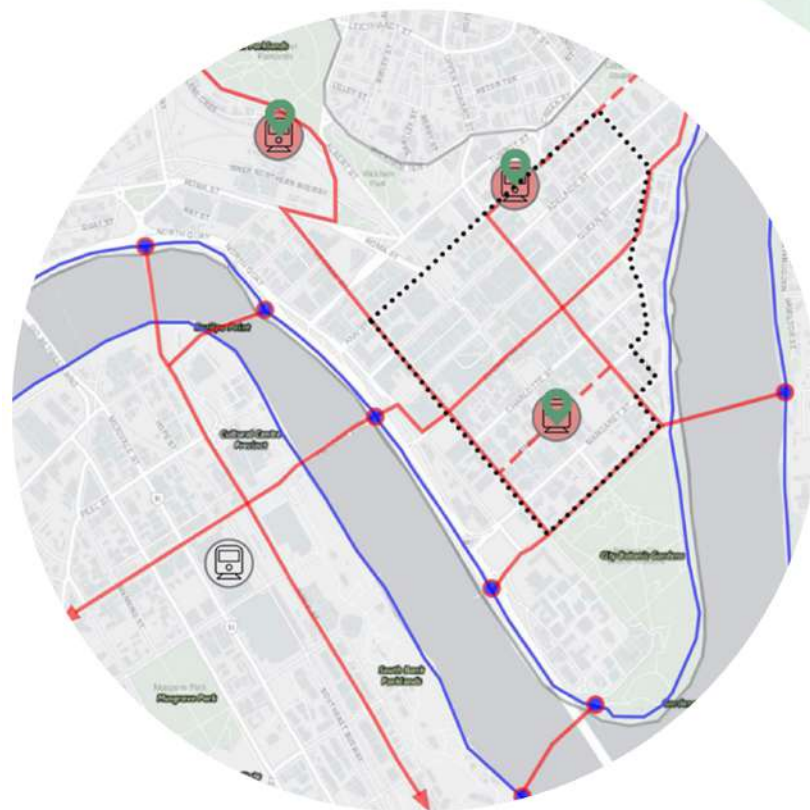
PROPOSED BRISBANE CBD CONGESTION CHARGE MAP


PROPOSED MAJOR PUBLIC TRANSIT MAP

- ERP Check-Point 
- Major Transit System 
- Emission Charge Zone 
- Congestion Charge Zone 

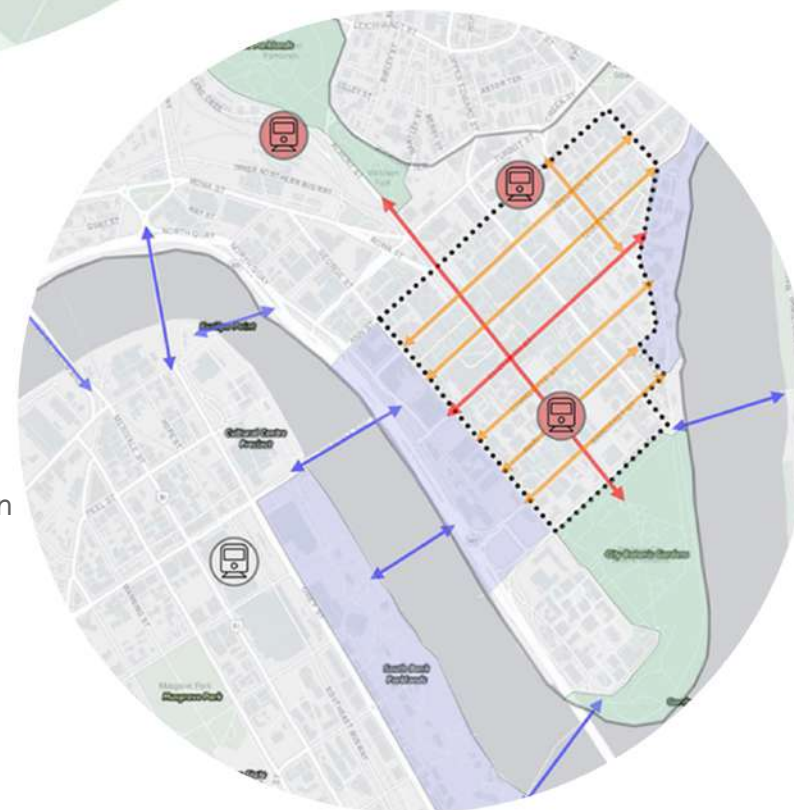





-  Major Railway Network
-  Major Busway Network
-  Major Transit Interchange



-  CBD Cycling Station
-  CityLink Cycleway
-  Riverside Cycleway

PROPOSED CBD CYCLING NETWORK



-  Pedestrian Corridor
-  Pedestrian Streetscape
-  Pedestrian Footbridge
-  Major Transit Interchange

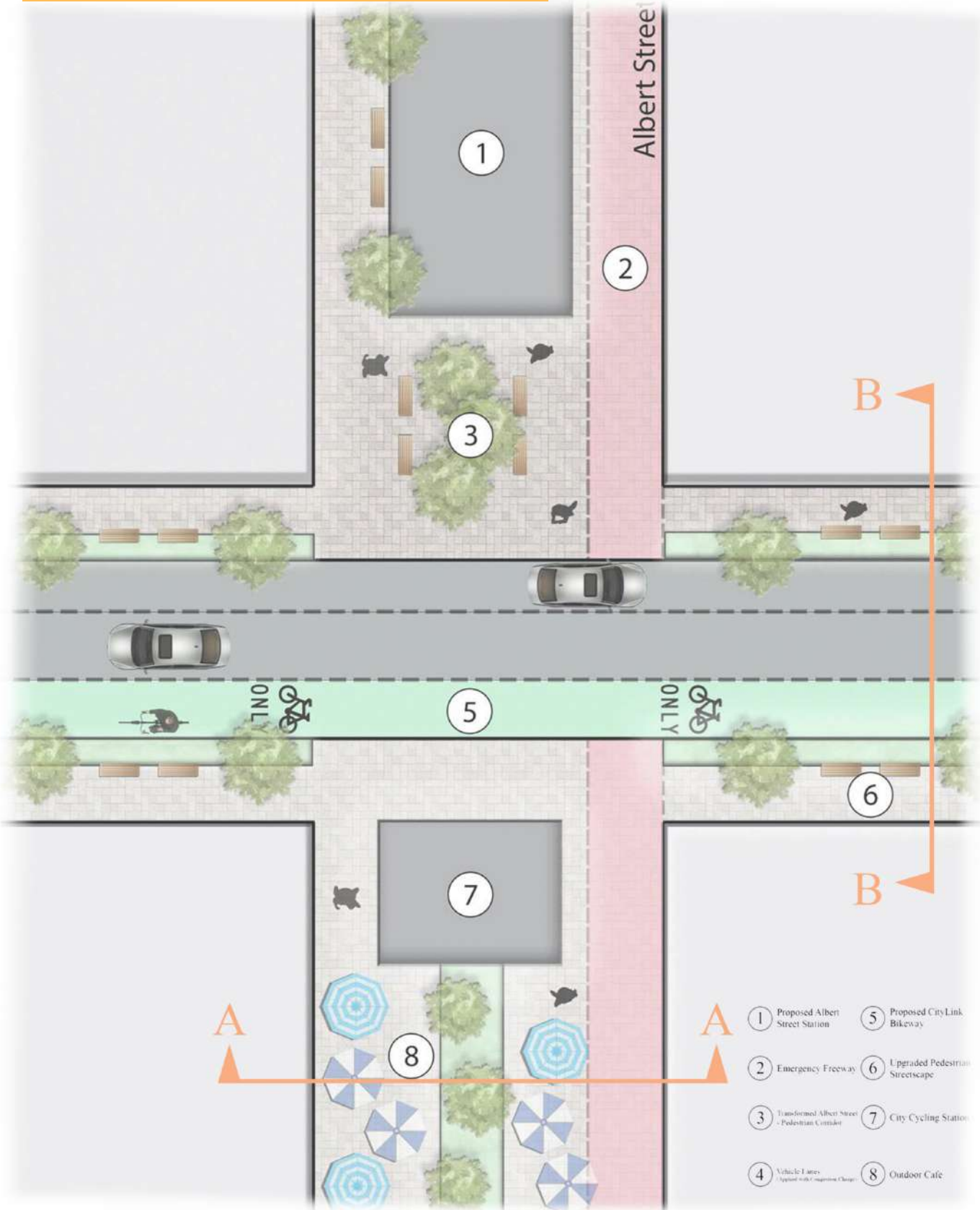
PROPOSED CBD PEDESTRIAN NETWORK

BRISBANE CBD PEDESTRIAN-ORIENTED NETWORK

- Development of CBD pedestrian corridor
- Activate featured pedestrian streetscapes to facilitate city life
- Establishment of CBD pedestrian-Only Zone that integrates with public transport

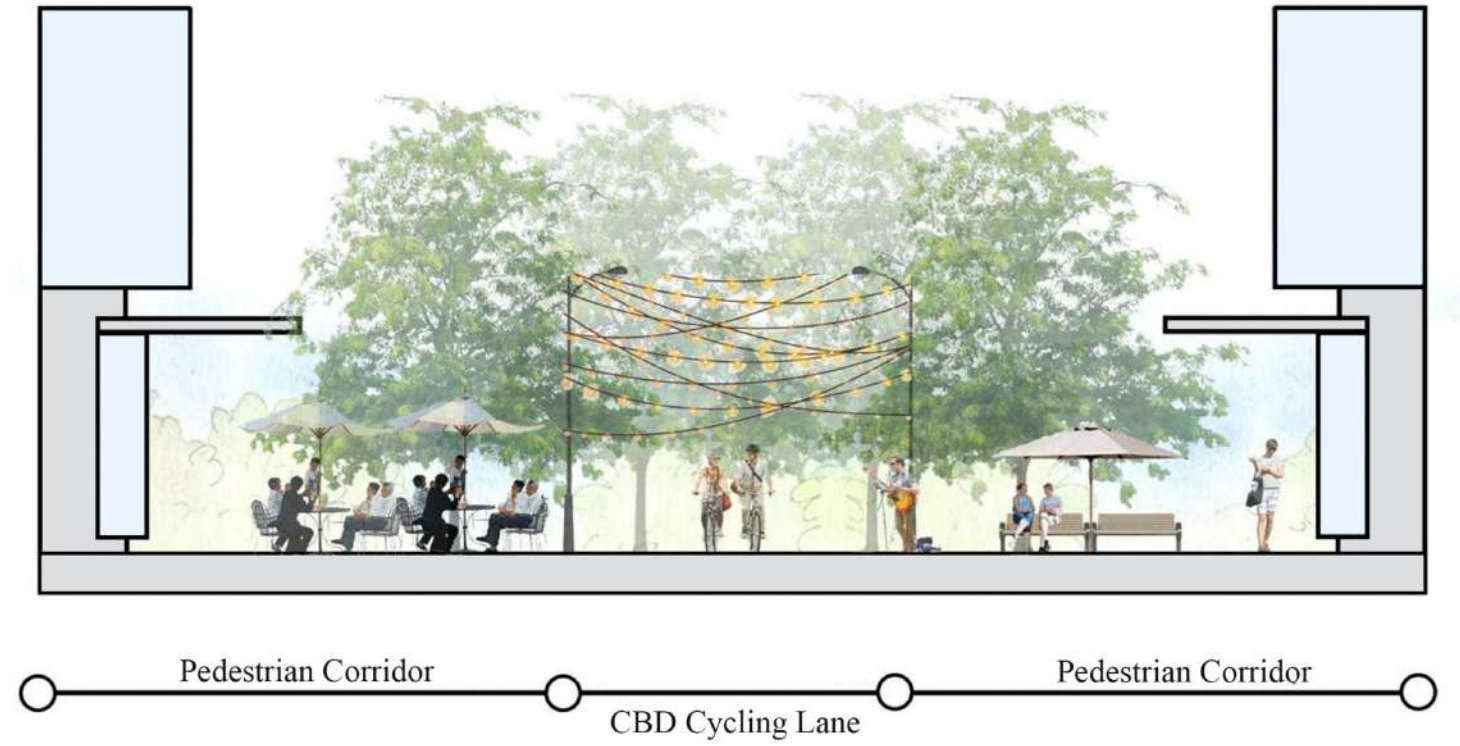


TRANSFORMATION OF BRISBANE CBD



SECTION A-A

Section showing the proposed Mary Street (Pedestrian Street)



SECTION B-B

Section of Proposed Albert Street (Pedestrian Corridor 1)

